

Primary high temperature lithium battery

SLB Battery Pack

25V Primary High-Temperature (Li-SOCl₂)
SLB Battery Pack for operation up to 165°C

Key features

Primary chemistry (non-rechargeable)

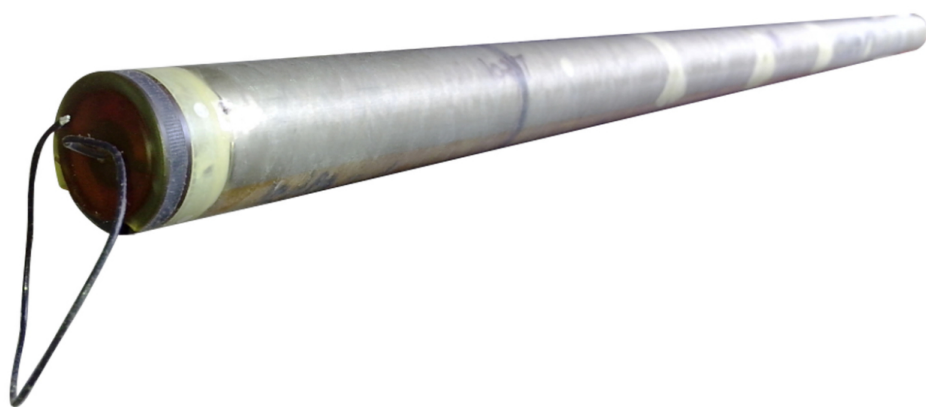
- High rate
- Hermetic glass-to-metal sealing engineered for leak free operation
- Sturdy and pressure resistant 304 stainless steel envelope
- Ability to withstand extreme shocks and vibration
- Non-bulge design feature
- Internal safety fuse and parallel diode
- Smart Chip prevents any cell be over discharged under 2.0V
- UN38.3 certified

Main applications

- MWD, LWD, Oil Well Instrumentation
- Well logging, Inclination and other instruments
- Coalbed methane, Geothermal, Geophysical prospecting

Cell size references

Battery Type	Li/SOCL2
Open Circuit Voltage	25V
Nominal Capacity	29.0Ah
Max Pulser Current	3000mA
Operating temperature range	-40°C - 150°C/165°C
Cell Type	D
Cells Qty	7
External Fuse Replaceable	3 Amp Fast Blow
SmartChip & Cell Phone APP	Optional
Self Discharge*	1% per year
Dimensions	Ø32.6mm*928mm
Weight	2.58kg



Gaobite

Specialty High Temperature Battery

No.7 Liangtian South Hengyi Road

Baiyun, Guangzhou, China

Tel:0086 13925299346

0086 13682536668

www.gaobitebattery.com

Reference

Gaobite is the high-temperature battery brand belongs to Jinhengyuan Electronic Technology Co., Ltd. Information in this document is subject to change without notice and becomes contractual only after written confirmation by Gaobite. The information on this data-sheet is for marketing purposes only. Please consult with Gaobite for more information regarding how our cells will perform within your application. The information in this document is subject to change without notice and does not constitute a warranty of performance. The length dimension was unsleeved. The use of terminations will impact overall cell length. Diameter measurements Does not include label or shrink. The "Main Application" list does not include all potential applications, please consult Gaobite for your application needs.

